

THE MAGAZINE OF SPLENDID HOMES AND GARDENS • JANUARY/FEBRUARY 2008

DESIGN

new england



Perfect Setting

An ancestral homestead is reborn as a sophisticated retreat

+ LUXURIOUS ECO FABRICS • MODERN MOUNTAIN GETAWAY • THE MOST INVITING DAYBEDS

www.designnewengland.com

£99 • DISPLAY UNTIL MAR. 11, 2008

D 1 >



744701 33337

COOK, PLAY, PARTY

An addition to a Victorian house in Brookline, Massachusetts, is designed with family and entertaining in mind

Written by **JILL CONNORS**
Photography by **ERIC ROTH**

JIM AND ALINA APTEKER LOVE TO ENTERTAIN. JIM, president of Longwood Events, a private-events company, is an avid cook. Alina, the company's creative director, likes to keep it casual, inviting 10 or 12 people, including kids, into the kitchen for good food and conversation. But the kitchen in the Second Empire house the couple bought in Brookline, Massachusetts, in 2003 was woefully inadequate on all counts. "It was a small room at the back of the house," says Alina, "and you were cut off when you were in there."

In 2005, after discovering that the foundation of the 1860 house needed structural work, the couple decided to go a step farther and build an addition that would give them the kitchen they wanted. They hired Boston-based architect Carlos Salib to execute the design for the 18 by 21-foot project, which took a year to complete.

Coming from a downtown Boston loft, the couple had a yearning for an open, airy space — one where they could combine the European style that Alina, a native of Poland, favors with the high-performance requirements of Jim, who grew up with parents in the restaurant business. They also wanted to improve the traffic flow so that the house would be more suited to their informal family lifestyle.



IN HER BROOKLINE, Massachusetts, kitchen, Alina Apteker watches as 2-year-old Aniela reaches into a drawer looking for a favorite cup. Light pours into the room through a cupola whose interior well is

adorned with fanciful wallpaper depicting oversize knives, forks, and spoons. Ebony-stained oak floors provide a deep contrast to Calcutta gold marble counters and matte-finish cabinetry.



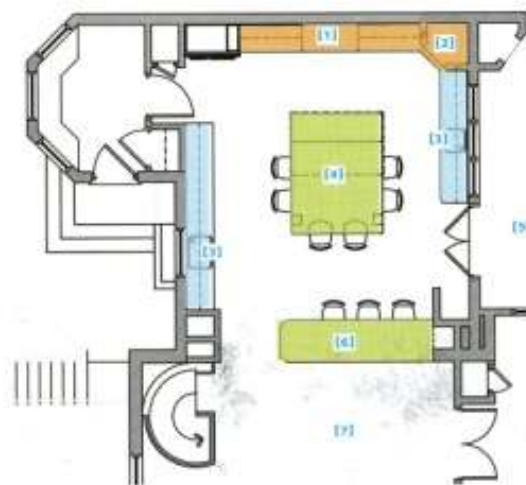
kitchen

"They wanted to maximize their space and to create something with light and drama," says Salib. "The kitchen size was determined by the setbacks to the house — we went as far as we could."

To ensure as much natural light as possible, Salib incorporated large windows on two exterior walls, a glass door to an adjoining terrace, and, the pièce de résistance, a cupola with transom windows. Outside, the cupola ties the addition to the Victorian house; inside, it became a key decorative element when Alina lined it with graphic wallpaper depicting oversized flatware.

Addressing the room's functionality, Salib and the Aptekers envisioned three distinct zones. Cooking is focused along a wall that holds the professional-style range and the oven for cooking pizza — a passion of Jim's

THE KITCHEN'S PRIMARY SINK (BELOW) features a commercial-style dishwashing faucet. The second sink (RIGHT) was placed near the door to the patio, handy for outdoor entertaining. The indoor pizza oven is a focal point when the couple entertains, and guests are encouraged to customize their own pizzas.



IN THE ZONES The room is designed around three zones, one for cooking, one for food preparation and clean up, and one for eating and hanging out.

- | | |
|-------------------------|-------------|
| 1 OVEN/RANGE | COOKING |
| 2 PIZZA OVEN | |
| 3 SINKS | FOOD PREP |
| 4 ISLAND | |
| 5 PATIO/OUTDOOR KITCHEN | HANGING OUT |
| 6 PENINSULA | |
| 7 FAMILY ROOM | |

During the daytime, the island is particularly dazzling because it is positioned directly under the cupola. "I wanted the island totally flooded with natural light," says Alina.

(there's an outdoor pizza oven on the terrace as well). For food preparation and cleanup, there are sinks and marble-topped counters on two walls. For hanging out, a long peninsula overlooks the adjacent family room, where the couple's 2-year-old daughter, Aniela, likes to play on the sofa and floor.

Key to all activities is the stunning 6½ by 8-foot marble-topped, steel-legged central island. It is prep surface, kitchen table, and party gathering spot all in one. "We eat all our family meals there," says Alina, who notes that Aniela is just the right height — at the moment — to run underneath the island without stooping. During the daytime, the island is



THE KITCHEN PENINSULA and doorway opening that face the family room (ABOVE) are covered in a tree-themed, neutral-hued wallpaper. A comfortable white sofa and oversize upholstered ottoman in the family room is a favorite spot for lounging guests. Contemporary Italian pendant lights (DETAIL, FACING PAGE) dangle above the peninsula. The beading and silver baubles add a dash of glamour.

particularly dazzling because it is positioned directly under the cupola. "I wanted the island totally flooded with natural light," says Alina.

With both storage and aesthetics in mind, Alina worked with Moda Cucina, a Boston-based custom cabinetmaker, to design both the island and the European-style cabinetry that stretches to the 10-foot ceilings. Base cabinets are either European oak that has been dyed white or stainless steel; most of the wall cabinets feature doors with glass inserts. "I've always loved the look of kitchens where the cabinets go to the ceiling," says Alina. "The glass doors keep the room looking airy."

"The kitchen is dramatic, a bit of a surprise that's great in this old house," says architect Salib. As for the Aptekers, they're going with the flow — the new traffic flow, that is. "It's a gorgeous house," says Alina, "and now the whole downstairs has the better flow we needed for the way we live — very relaxed, but with style." ■

FOR MORE DETAILS SEE RESOURCES